



OAKFIELD



Dorset Road, Bexhill-On-Sea

£995 Per Calendar Month



Dorset Road, Bexhill-On-Sea

This two double bedroom apartment is located in the outskirts of Bexhill Town Centre close to Ravenside Retail Park and a short distance away from the town centre.

The property comprises two double bedrooms, a modern fitted kitchen with dishwasher, washing machine, fridge/freezer and electric cooker, a newly fitted bathroom with full sized bath and shower over and a spacious living room over looking the communal gardens.

Further benefits of the property include gas central heating, street parking and modern throughout.

An annual household income of £29,850 is required to meet the affordability criteria for this property.



Living Room
14'10" x 13'6" (4.538 x 4.132)

Kitchen
12'8" x 4'10" (3.877 x 1.495)

Bedroom One
11'11" x 12'3" (3.656 x 3.742)

Bedroom Two
10'7" x 9'7" (3.229 x 2.943)

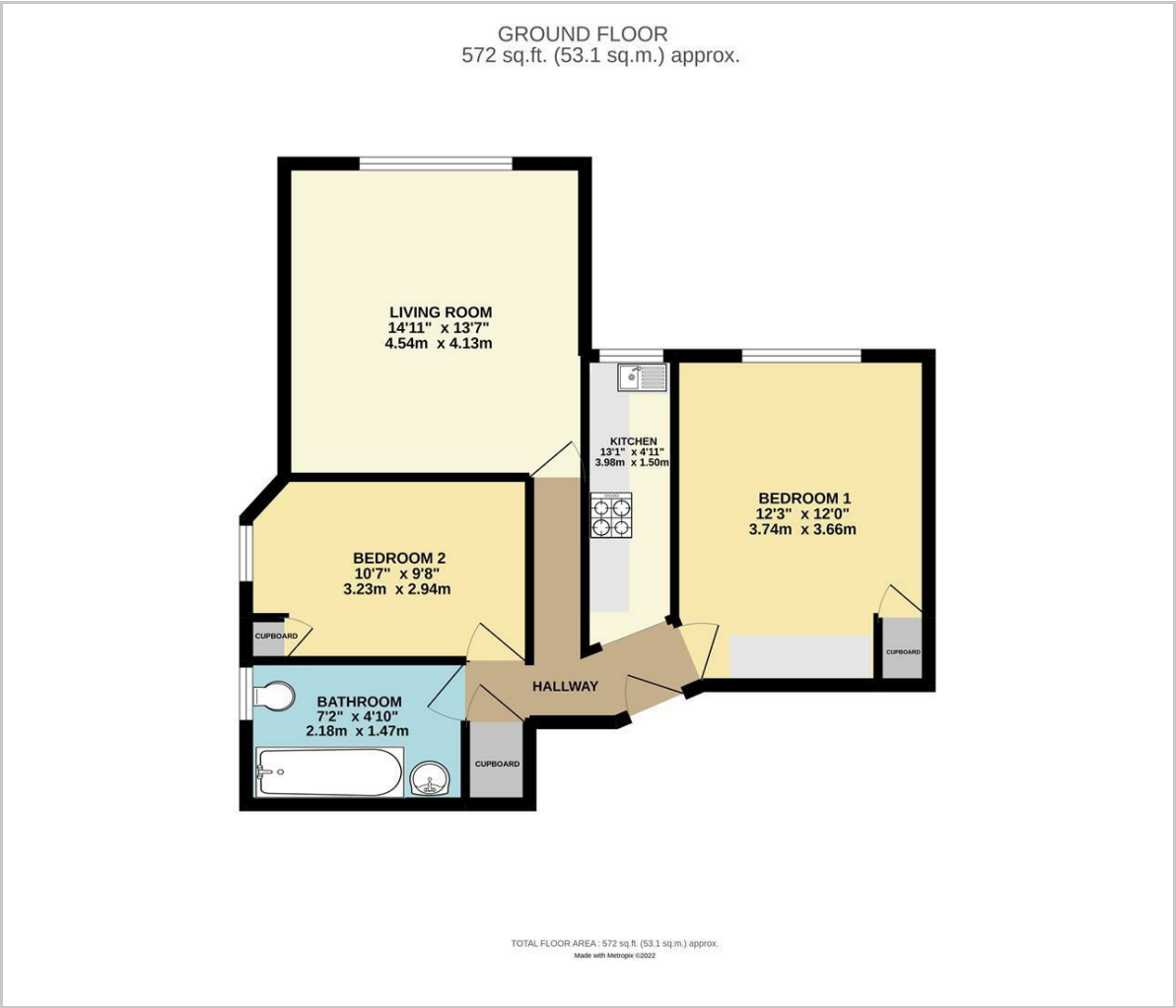
Bathroom
7'1" x 4'9" (2.179 x 1.465)

Council Tax Band A £1474 Per Annum

- Zero Deposit Available
- Two Double Bedrooms
- New Bathroom Fitted
- First Floor Flat
- Street Parking
- Appliances included
- Gas Central Heating
- Double Glazed
- Secure entry phone system
- Available Now



Floor Plan

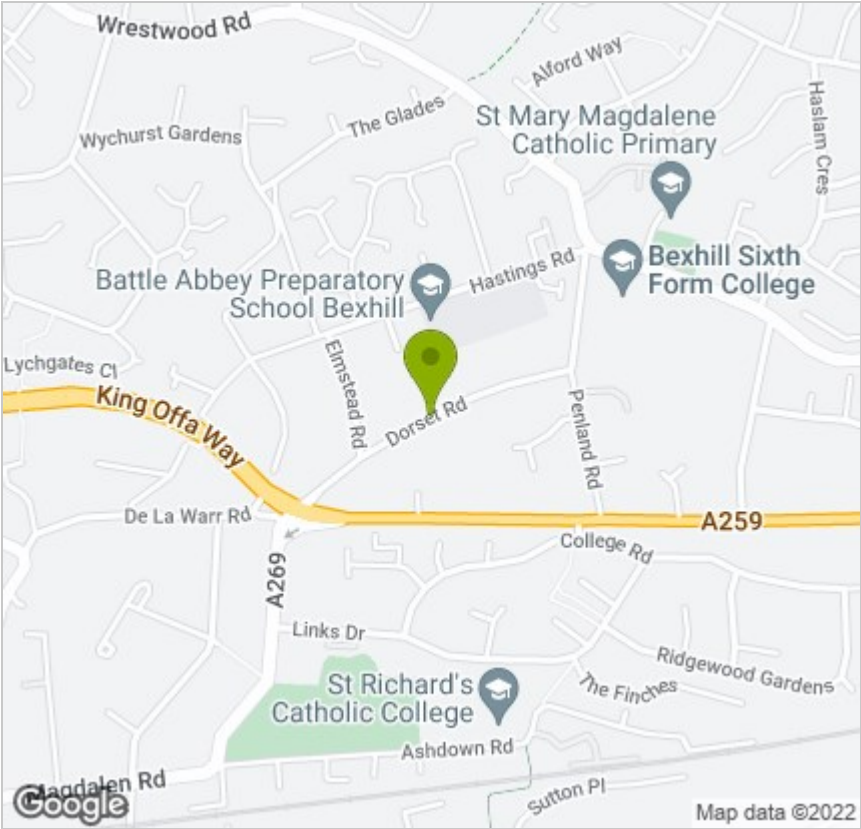


Viewing

Please contact us on 01424 817075
if you wish to arrange a viewing appointment for this property or require further information.

These particulars, whilst believed to be accurate are set out as a general outline only for guidance and do not constitute any part of an offer or contract. Intending purchasers should not rely on them as statements of representation of fact, but must satisfy themselves by inspection or otherwise as to their accuracy. No person in this firms employment has the authority to make or give any representation or warranty in respect of the property.

Area Map



Energy Efficiency Graph

